

## Enchantment of Eastern Europe



19th June  
2026

Exclusive departure

**8 nights**

Price from

**£2806pp**

Panorama Balcony

from **£3591pp**

Past guest

loyalty discounts

available up to £400pp

*Fly from Humberside via Amsterdam to Bucharest*

**Day 1**

**Bucharest**

**Friday  
19 June**

**Enjoy an included pre cruise stay in Romania's Capital City**

Welcome to Bucharest, where you'll be met at the airport and transferred to your hotel, perfectly situated in the city, for your overnight stay.

Nicknamed the 'Paris of the East', the centre of Bucharest encapsulates a distinctive Parisian atmosphere, with wide avenues adorned by famous landmarks and quaint leafy boulevards that cross the city

**Day 2**

**Saturday  
20 June**

**Bucharest - Giurgiu (B,D)** After enjoying the plush surrounds of your hotel this morning, you'll have the opportunity to learn about some of Bucharest's most iconic attractions during a guided drive around the city, including a visit to the Spring Palace. Then, you'll have time to explore the leafy boulevards at your leisure.

After your insightful tour, you'll be transferred from Bucharest to Giurgiu, on the banks of the Danube, where a warm welcome from your captain and crew awaits on board your Emerald Cruises Star-Ship.

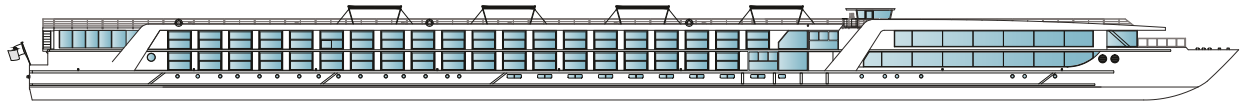
**Included Excursion**

Guided drive through Bucharest with a visit to the Spring Palace

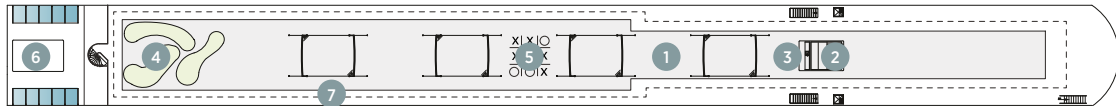
# Danube, Rhine, Main & Moselle deck plans

## Emerald Dawn, Emerald Sun & Emerald Luna

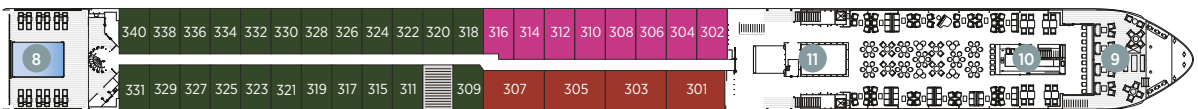
• Built: 2015 & 2020 • Length: 443ft (135m) • Guests: 180 • Cabins: 91 • Crew Members: 52



Sun Deck



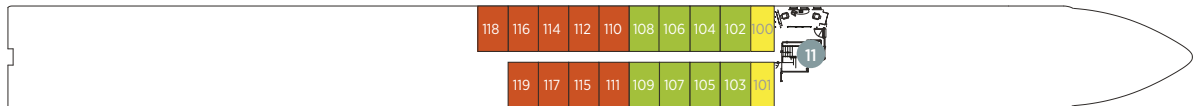
Horizon Deck



Vista Deck

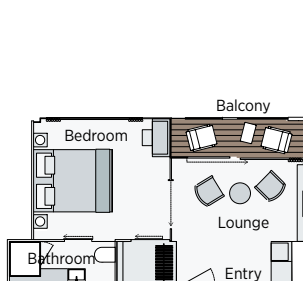


Riviera Deck

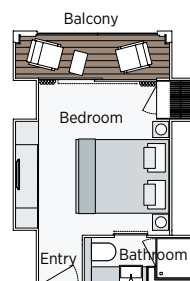


Cabin Categories		
Horizon Deck		Size ft <sup>2</sup> (m <sup>2</sup> )
<b>CAT SA</b>	Owner's One-Bedroom Suite	315ft <sup>2</sup> (29.3m <sup>2</sup> )
<b>CAT S</b>	Grand Balcony Suite*	210ft <sup>2</sup> (19.5m <sup>2</sup> )
<b>CAT A</b>	Emerald Panorama Balcony Suite	180ft <sup>2</sup> (16.7m <sup>2</sup> )
Vista Deck		Size ft <sup>2</sup> (m <sup>2</sup> )
<b>CAT B</b>	Emerald Panorama Balcony Suite	180ft <sup>2</sup> (16.7m <sup>2</sup> )
<b>CAT C</b>	Emerald Panorama Balcony Suite	180ft <sup>2</sup> (16.7m <sup>2</sup> )
Riviera Deck		Size ft <sup>2</sup> (m <sup>2</sup> )
<b>CAT D</b>	Emerald Stateroom	162ft <sup>2</sup> (15m <sup>2</sup> )
<b>CAT E</b>	Emerald Stateroom	162ft <sup>2</sup> (15m <sup>2</sup> )
<b>CAT ES</b>	Emerald Single Stateroom	117ft <sup>2</sup> (10.9m <sup>2</sup> )

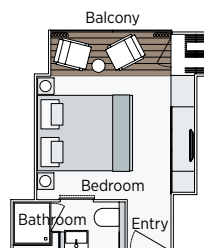
- 1 Sun Deck with Deck Chairs^
- 2 Navigation Bridge
- 3 Sky Barbecue
- 4 Golf Putting Green
- 5 Games Area
- 6 Retractable Glass Roof
- 7 Walking Track
- 8 Daytime Pool & Bar/Evening Cinema
- 9 The Terrace
- 10 Horizon Bar & Lounge
- 11 Lift
- 12 Reception
- 13 Wellness Area
- 14 Fitness Area
- 15 Reflections Restaurant



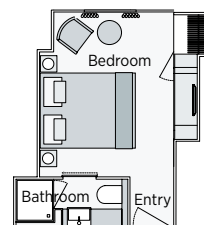
Owner's One-Bedroom Suite  
315ft<sup>2</sup> (29.3m<sup>2</sup>)  
**CAT SA**



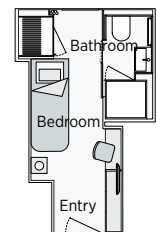
Grand Balcony Suite  
210ft<sup>2</sup> (19.5m<sup>2</sup>)  
**CAT S**



Emerald Panorama Balcony Suite  
180ft<sup>2</sup> (16.7m<sup>2</sup>)  
**CAT A CAT B CAT C**



Emerald Stateroom  
162ft<sup>2</sup> (15m<sup>2</sup>)  
**CAT D CAT E**



Emerald Single Stateroom  
117ft<sup>2</sup> (10.9m<sup>2</sup>)  
**CAT ES**

**Important Information:** The cabin and deck plans, sizes and photographs are an indication only and are subject to variation.

^ Due to safety, the Sun Deck will be closed when travelling under low bridges.

\* Cabin 316 has a slightly varied layout.

<b>Day 3</b> <b>Sunday</b> <b>21 June</b>	<p><b>Rousse (B,L,D)</b> Today, you'll have the opportunity to learn about Bulgarian history, as you explore the city that many call "The Little Vienna". Immerse yourself in the beauty of its Neo-Baroque and Neo-Rococo architecture and stroll along the charming promenade. If you would prefer to do something more active, then instead, you could choose to embark on a guided hike to the UNESCO World Heritage-listed Rock-Hewn Churches of Ivanovo, known for their famous 14th-century frescoes.</p> <p>Tonight, you'll have the chance to mingle with your fellow guests while enjoying the welcome reception and dinner.</p> <p><b>Included Excursion</b> Walking tour of Rousse</p> <p><b>EmeraldACTIVE</b> Guided hike to Ivanovo Church</p> <p><b>EmeraldPLUS</b> Choir concert</p> <p><b>DiscoverMORE</b> Full day Tour of Veliko Tarnovo and Arbanasi (extra expense)</p>
<b>Day 4</b> <b>Monday</b> <b>22 June</b>	<p><b>Vidin (B,L,D)</b> Viticulture forms the heart of life in the most western town in Bulgaria, where sun-kissed vineyards pepper the banks of the Danube and winemaking has prospered for generations. Your included tour of Vidin will introduce you to a peaceful side of life that revolves around wine, as you weave through a local vineyard and learn about their produce, before enjoying a tasting session. Afterwards, your local guide will take you to Baba Vida, a fortress that was originally constructed at the turn of the 10th century and is known for being one of only a handful of beautifully preserved castles in the country</p> <p><b>Included Excursion</b> Visit to a local vineyard with wine tasting &amp; a visit to Baba Vida Fortress</p> <p><b>EmeraldACTIVE</b> Guided hike to Belogradchik Fortress</p> <p><b>DiscoverMORE</b> Traditional Bulgarian pastry making (extra expense)</p>
<b>Day 5</b> <b>Tuesday</b> <b>23 June</b>	<p><b>Donji Milanovac - Golubac (B,L,D)</b> This morning, relax on board and admire your surroundings as we sail along the mighty Danube to Donji Milanovac, where a visit to the Lepenski Vir archaeological site, one of Europe's best-hidden gems, awaits. Located right on the riverbanks, the Palaeolithic site is one of the most important of its kind on the continent, effortlessly capturing more than eight millennia of history. Archaeologists from around the world have used this site to learn about a number of different Stone Age settlements and the way that prehistoric cultures moved across Europe.</p> <p><b>Included Excursion</b> Visit to Lepenski Vir archaeological site and museum</p> <p><b>DiscoverMORE</b> Golubac Castle Visit (extra expense)</p>
<b>Day 6</b> <b>Wednesday</b> <b>24 June</b>	<p><b>Belgrade (B,L,D)</b> Serbia's vibrant capital is yours to explore today. Your local guide will take you on a coach tour through the heart of the city, highlighting its many landmarks. The coach will pass through the centre, where you'll notice reminders of the country's turbulent history, set amongst the quiet and peaceful streets. Witness the ornate beauty of the Church of Saint Sava, one of the largest religious buildings in Europe, before stopping for a tour of the Museum of Yugoslavia. If you're feeling more active, then you may instead choose to learn about Belgrade's history during a guided bike tour.</p> <p>This evening, you will be invited to the Horizon Lounge where a traditional Serbian folklore show will provide spectacular entertainment.</p> <p><b>Included Excursion</b> Highlights of Belgrade</p> <p><b>EmeraldPLUS</b> Serbian folklore evening show on board</p> <p><b>EmeraldACTIVE</b> Guided bike tour in Belgrade</p> <p><b>DiscoverMORE</b> National Opera Theatre tour (extra expense)</p> <p><b>DiscoverMORE</b> Routes of Nikola Tesla (extra expense)</p>

<b>Day 7</b> <b>Thursday</b> <b>25 June</b>	<p><b>Vukovar (B,L,D)</b> Today, you will have the opportunity to enjoy a truly unforgettable EmeraldPLUS experience, as you're invited into the home of a local family for a traditional Croatian lunch.</p> <p>Enjoy an afternoon of sailing further up the Danube towards Hungary, before joining your fellow passengers for a farewell dinner.</p> <p><b>EmeraldPLUS</b> Home-hosted lunch with a Croatian family</p> <p><b>DiscoverMORE</b> Vucedol Culture Museum (extra expense)</p>
<b>Day 8</b> <b>Friday</b> <b>26 June</b>	<p><b>Kalocsa (B,L,D)</b> In the morning, we will sail to Kalocsa, a place known for its paprika production and colourful festivals. Discovering Hungary's culture is an easy task in Kalocsa, where traditional folk art can be found around every corner and old traditions pave the way for daily life.</p> <p>Later, you will venture to the Puszta, or Great Hungarian Plain, to visit a traditional Puszta horse farm. Your guide will teach you about the traditional performances of the Magyar cowboys, and you'll have the opportunity to witness some of their exceptional equestrian skills first-hand as they showcase some of their exercise drills.</p> <p>This evening, enjoy an authentic Hungarian folklore show on board, followed by a traditional dinner.</p> <p><b>EmeraldPLUS</b> Puszta Equestrian Heritage</p> <p><b>EmeraldPLUS</b> Traditional Hungarian folklore show on board</p>
<b>Day 9</b> <b>Saturday</b> <b>27 June</b>	<p><b>Budapest (B)</b> After breakfast, it is time to say farewell to your fellow guests and transfer to the airport for your flight via Amsterdam to Humberside where we will be waiting to take you home.</p> <p><i>This itinerary is a guide only and may be amended for operational reasons such as high and low water. As such, the cruise may operate altered from that stated above. Please refer to our terms and conditions for further information.</i></p>

## Included in your price

- \* All meals - amazing cuisine
- \* All drinks
- \* Gratuities
- \* Excursions as shown
- \* Travel from your door to Humberside airport
- \* Past guest loyalty discount minimum £100

For bookings & further information contact:

**MARIONOWENTRAVEL TEL 01482 212525**

or visit us in person Monday to Friday 9am - 4pm

**23 Portland Street, HULL, HU2 8JX**

email: [team@marionowentravel.com](mailto:team@marionowentravel.com)